



GSMP Intro

June 2008



20 March 2008



What's The Value Of Having Well Specified Instructions?



What Is GSMP?



"...The GSMP ...brings together users from all industries and from everywhere in the world"

Forbs.com



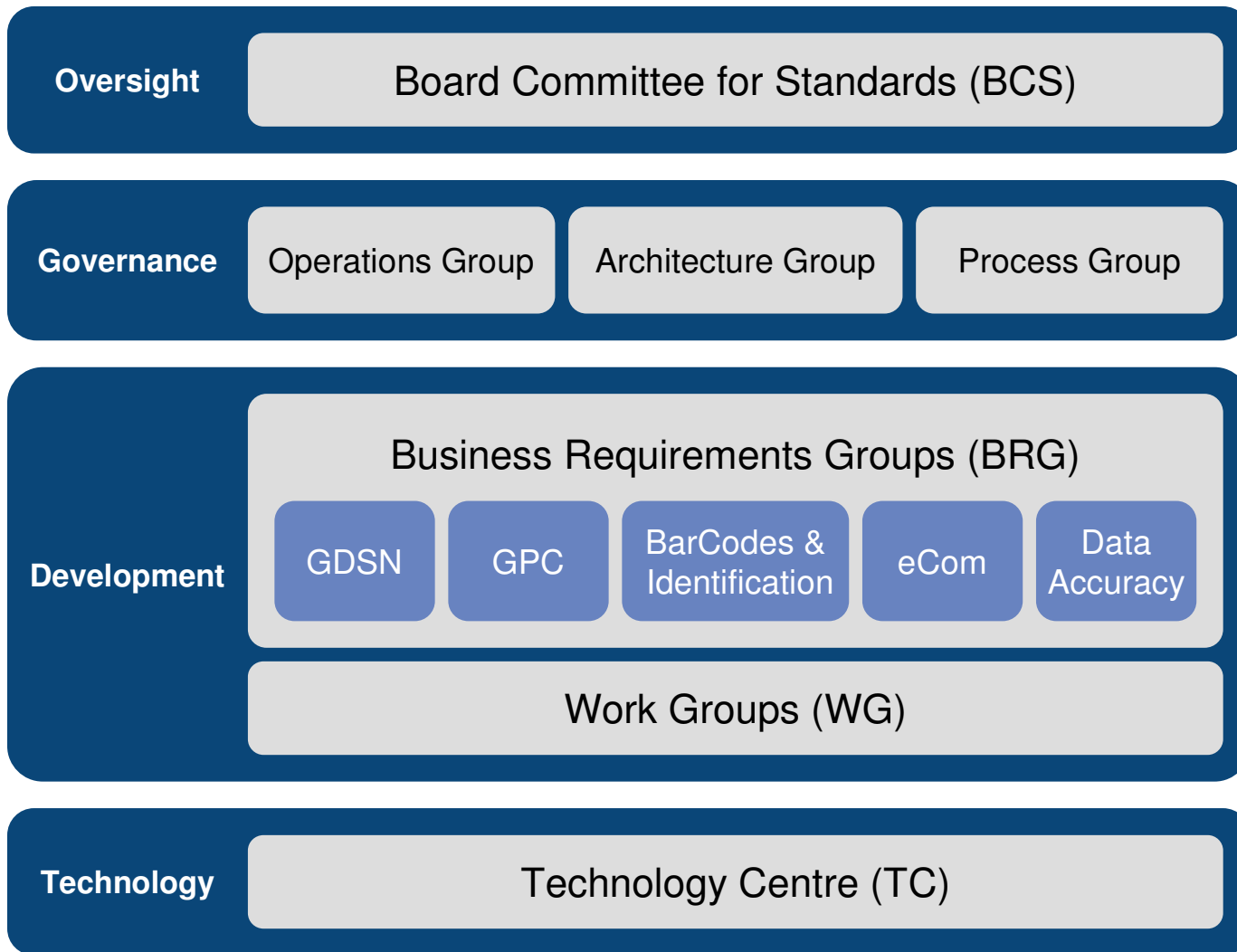
"...The GSMP is the pre-eminent worldwide collaborative forum"



"...The GSMP ...the engine that powers the entire GS1 system of standards."



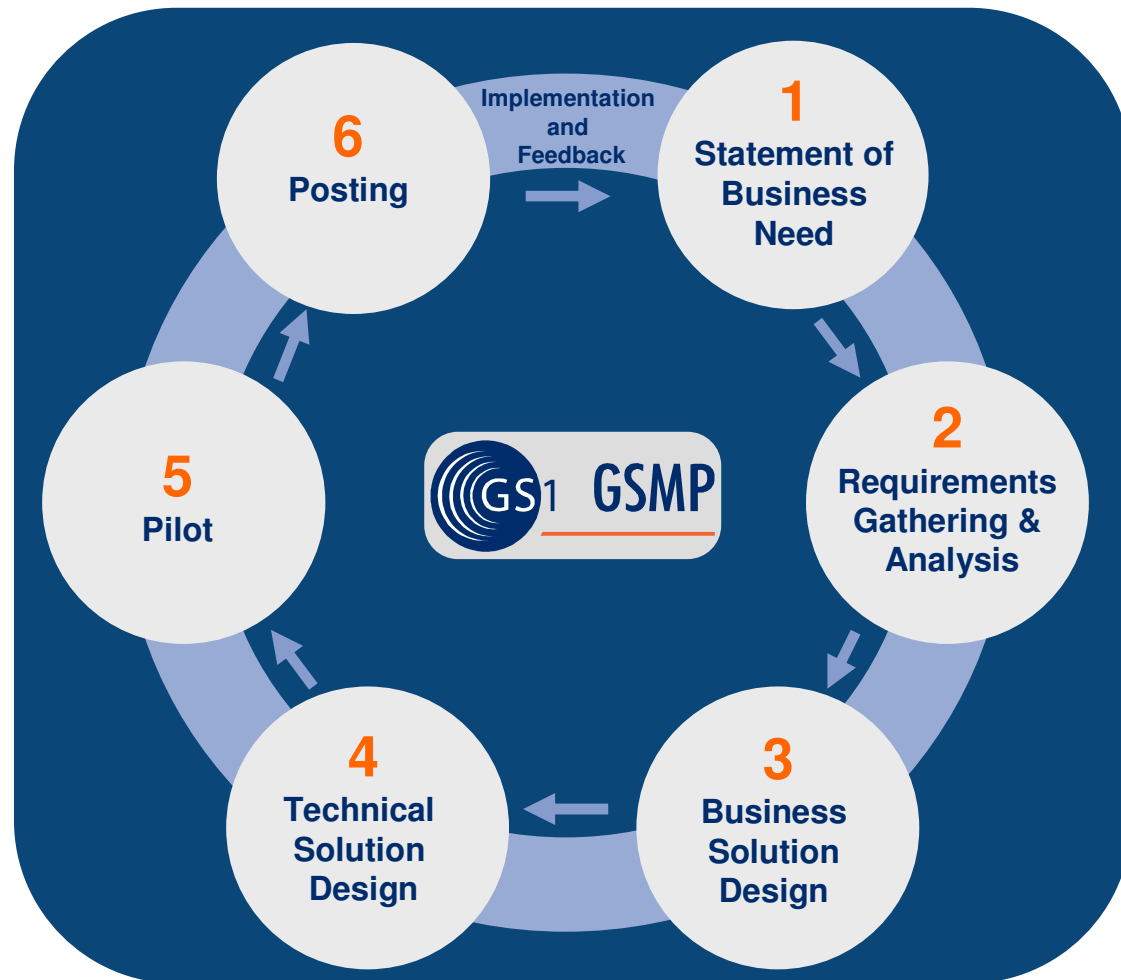
GSMP Structure of the GSMP



Local Community Network

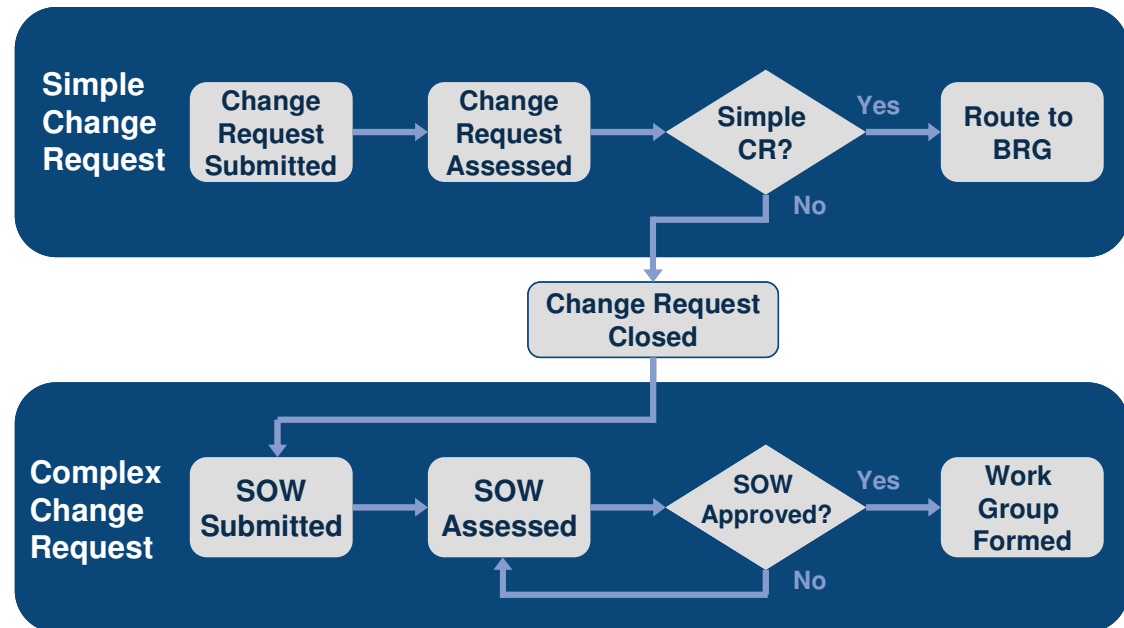


GSMP 6 Step Process: How It Works



What are the classifications of CRs?

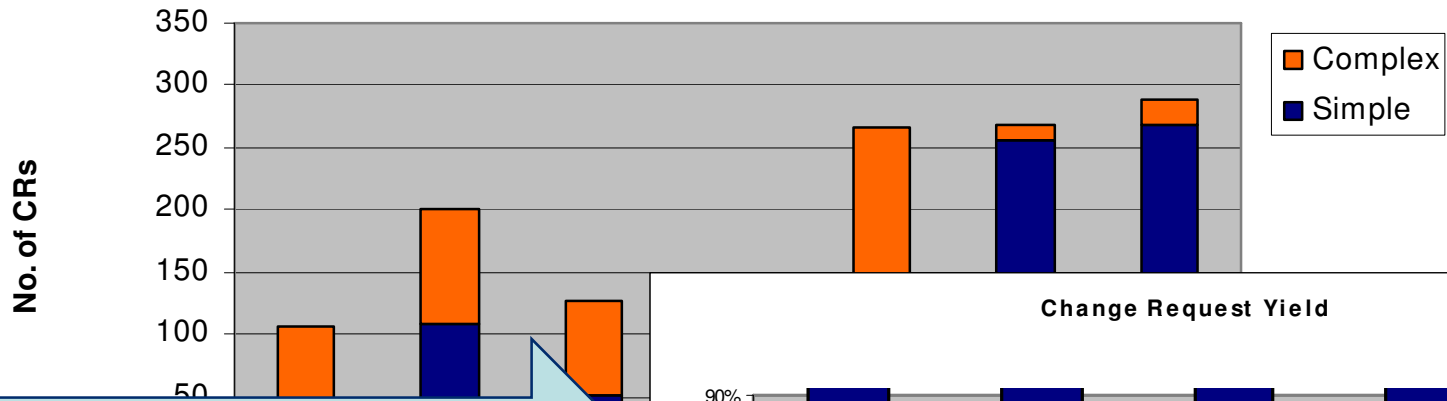
- Change Request (CR) is the term used in GSMP to indicate how changes to standards are handled.
- There are two types of Change Requests: **Simple** and **Complex**.
- The type of Change Request determines the work and how it is processed
- The level of effort is the key



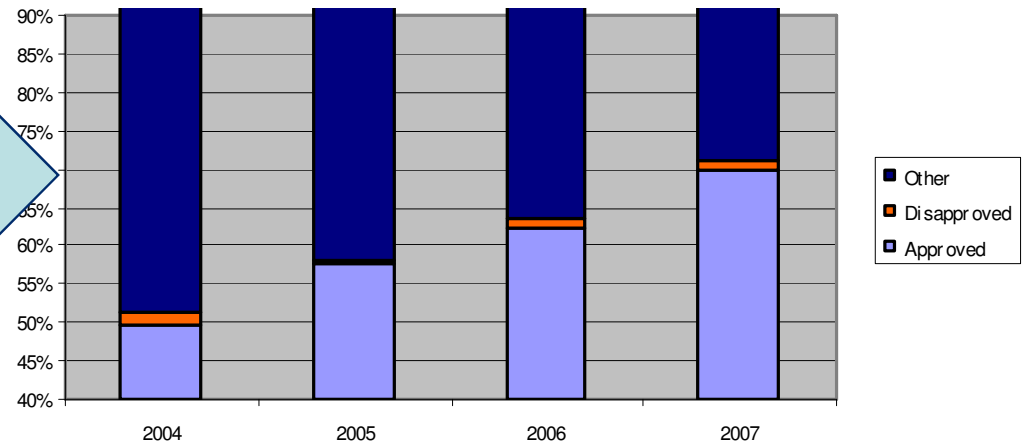
More CR's Reach A Successful Conclusion For The Communities Who Request Them

Average Cycle Time

Change Requests - by Year



Change Request Yield



More CR's that enter Yield a positive result



GS1 Knowledge Centre:
Global Single point of entry for
all approved GS1 standards
and solutions documents





Realizing the Global Language of Business: The GS1 Global Data Dictionary

A world map is centered in the background, overlaid with a large blue circular GS1 logo. The map is surrounded by a collage of various national flags from different countries. The text "126 Countries Speaking GS1 Languages" and "80 Thousand Visitors" is prominently displayed over the map and logo.

126 Countries
Speaking GS1 Languages
80 Thousand Visitors



- Enabling GSMP and the GS1 System to support multiple-Sectors & Solutions



Key Elements of a Multi-Sector GSMP

Governance: Comprised of all stakeholders



Infrastructure: Supports all sectors

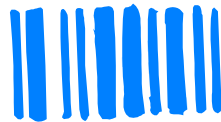
Community Management: Sector specific customer focus



Process: Efficient

SHIP TO:

Deliverables: Provides solutions by sector





How Can We Organize Standards For Different Verticals?

- Developed by ebXML
- UN/CEFACT & ISO standard (ISO 15000-5)
- Included in the GS1 ebMethodology

Context Category	Description
Business Process	The business process as described using the EAN.UCC reference model “General Business Model” for Common Business Processes.
Product Classification	Factors influencing semantics that are the result of the goods or services being exchanged, handled, or paid for, etc. (e.g., the buying of consulting services as opposed to materials)
Industry	Related to the industry or industries of the trading partners.
Geopolitical	Geographical factors that influence business semantics.
Official Constraints	Legal and governmental influences on semantics (e.g., hazardous materials information REQUIRED by law when shipping goods).
Business Process Role	The actors conducting a particular business process, as identified in the Catalogue of Common Business Processes.
Supporting Role	Semantic influences related to non-partner roles (e.g., data REQUIRED by a third-party shipper.)
System Capabilities	This context category exists to capture the limitations of systems (e.g., an existing back office can only support an address in a certain form).



Thank You

The global language of business

www.gs1.org