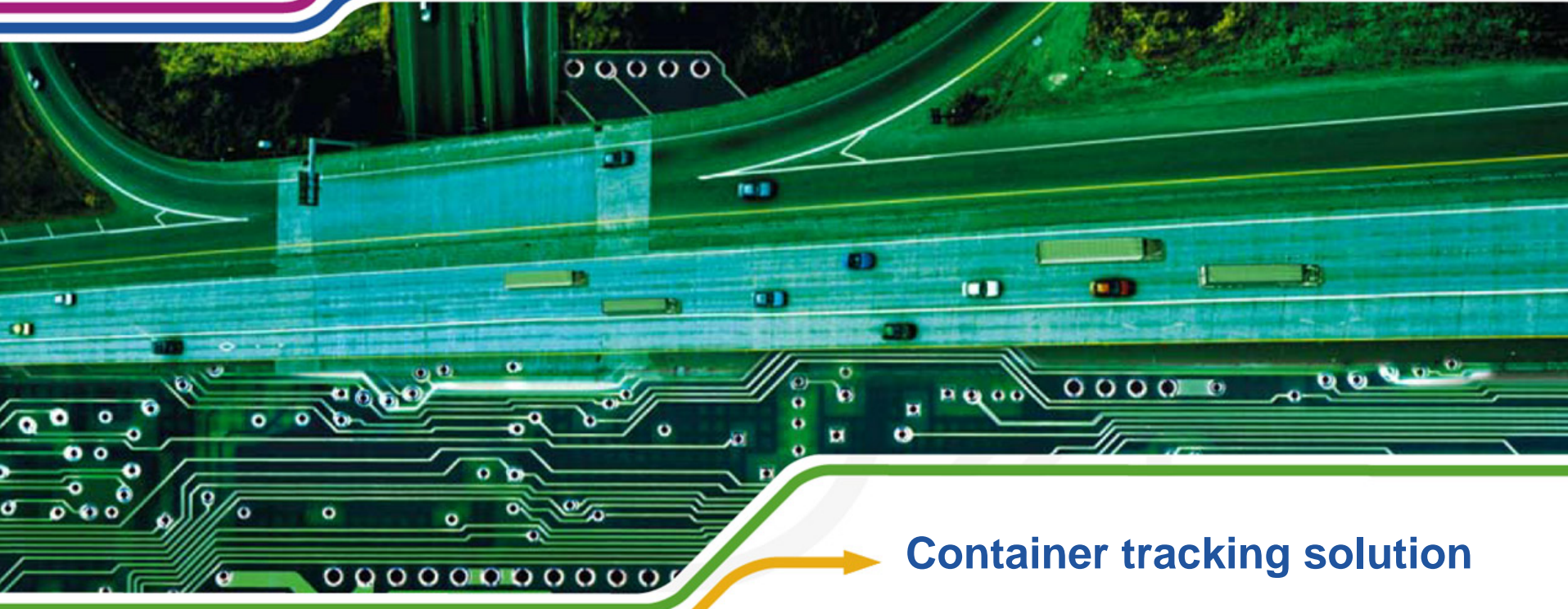




GEODIS



Container tracking solution

HUG DIJON 2006
Jean-Christophe Lecosse



Geodis

Global logistic provider
Expertise Healthcare
Our RFID approach

Optitr@ck: container tracking solution

CHU Dijon project



- ▼ A European player with global ambition (European ranking of international providers: n°4)
- ▼ 2005 sales: €3.6 billion (+6.7%)
 - Network covering 120 countries
 - 23,800 employees including 700 engineers and core business experts



Coordination

- Advance consulting and optimisation
- Coordination of operations
- End-to-end flow management

Reverse Logistics

- Pick-up and transport
- Diagnostics - processing
- Container management
- Recycling/recovery services

Air & Sea Freight

- Air freight
- Sea freight
- Customs
- Turnkey projects

Groupage

- Urgent groupage
- Express groupage
- Chartering

Logistics

- Pre-production logistics
- Production logistics
- Post-production logistics
- Value-added services

Full Truck Loads

- Full loads
- Transport on demand
- Specialised transport
- Multimodal





A Global Logistics
Provider



Automotive



Retail



Chemicals/Industry/
Aerospace



Healthcare &
Cosmetics



High-Tech
Brown Goods



Consumer
Goods



Textiles



White Goods/Home/
Leisure



Wines & Spirits



Geodis

Global logistic provider

Expertise Healthcare

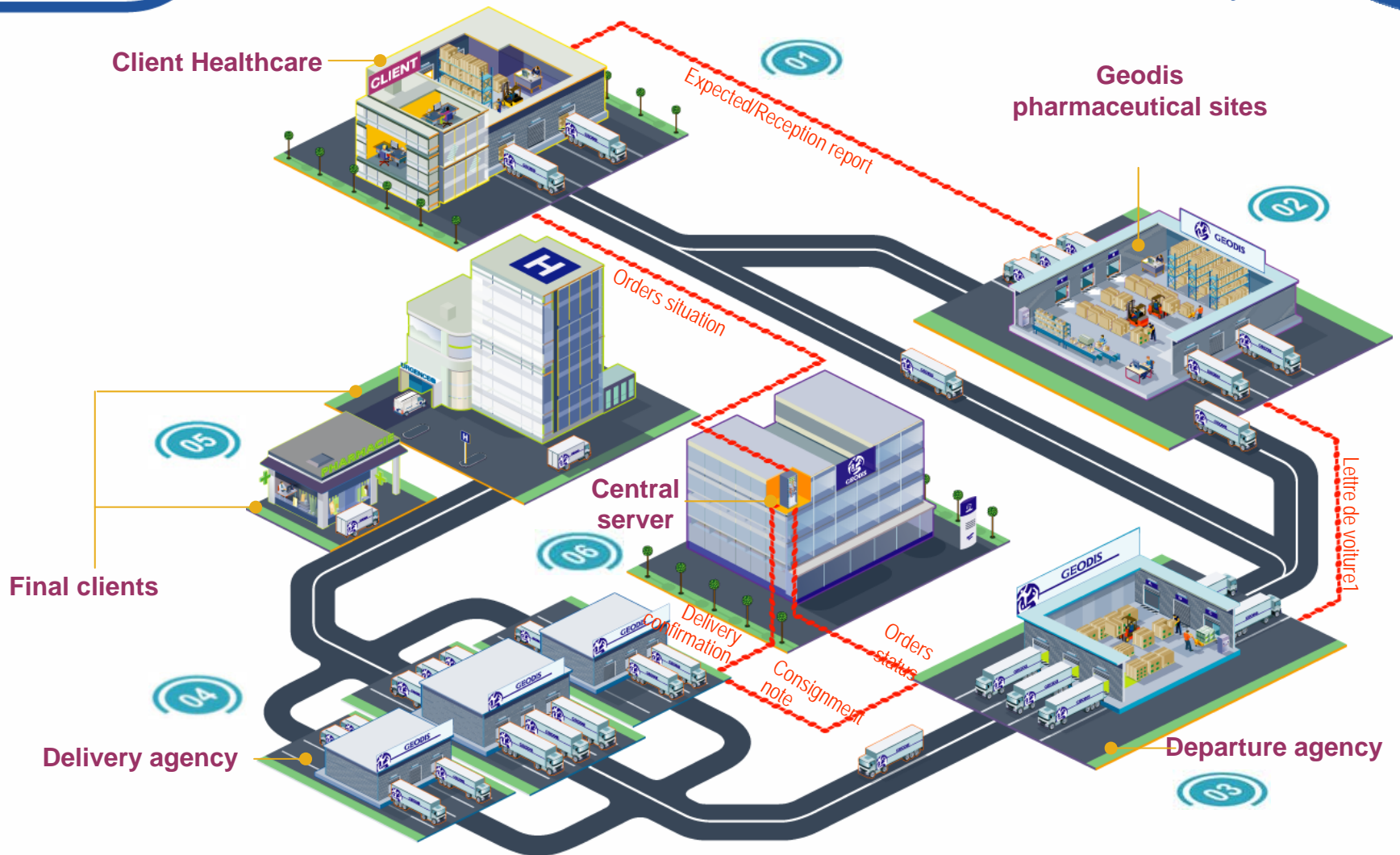
Our RFID approach

Optitr@ck: asset management solution

CHU Dijon project

Expertise Healthcare

The added value throughout the supply chain :
Flows traceability





Geodis Pharmaceutical Sites

- A report is sent after the control of the received products
- Use of standard codification EAN 128 for the traceability of batches (receiving, storage, preparation)
- Quarantine products management (automated and physical)
- Returns management
- Control and registration of movements made in warehouses (indissociable pair « reference / lot n° »)
- Automated alert management (released, quarantine, ...)
- Orders preparation by radio frequency
- Traceability of orders prepared with a SSCC labeling (serial n° of single pallet)
- Specific labeling of products (green label)
- Loading control with a bar-code reader
- Sending of transport documents via EDI towards the Departure agency



05

Final Clients

- Delivery to **Healthcare professionals** (pharmacies, hospitals, medical staff, doctors....)
- Taking account of **order instructions**
- Our customers and their customers are able to monitor shipments via Internet, agree to a new delivery and contact the Delivery agency
- Express, use of loaded electronic data on the Internet to make available a photograph of the signature and the delivery status 15 mins after delivery
- Visualization of proof of delivery on Internet (photograph of signature and scan of the receipt)

Expertise Healthcare

Major players trust in us



Pharmaceuticals



Personal care



Medical devices





Expertise Healthcare

Major players trust in us



Pharmaceuticals



Personal care



Medical devices



L'ORÉAL

EXPANSCIENCE[®]
LABORATOIRES

COLGATE-PALMOLIVE

Unilever

SHISEIDO

Johnson & Johnson





Expertise Healthcare

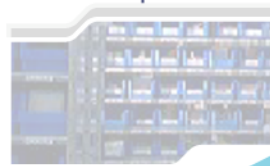
Major players trust in us



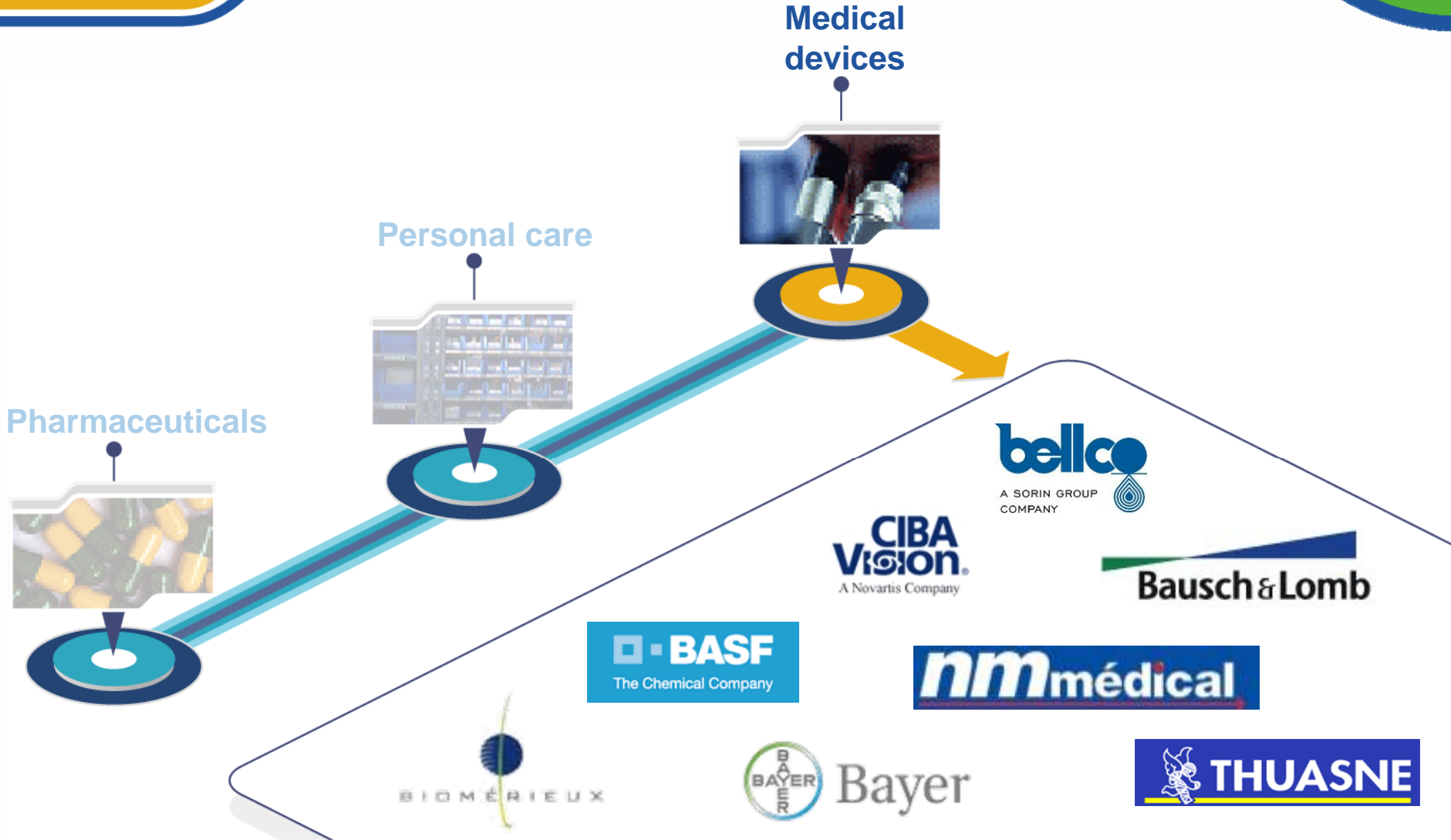
Pharmaceuticals



Personal care



Medical devices





◉ A multi-business offer

Commercial activities



470
clients



20

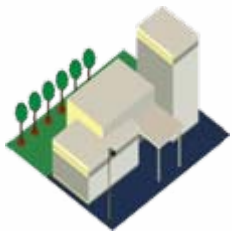


240



210

Sites



7 dedicated sites
2 non-dedicated sites
100,000 sq. m
warehousing



2 dedicated agencies
6,000 dedicated sq. m
240 agencies in France



20 agencies
Presence in
120 countries



☉ A multi-business offer

Flow handled / year



1.5 million orders
30,000 references
6 million lines



1 million positions
80,000 T handled



1,000 containers
3,000 T handled (air)

Employees implicated



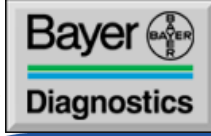
250 dedicated operations
45 IT people
15 engineers
20 sales people



30 dedicated operations
55 IT people
5 engineers
30 sales people



30 IT people
20 sales people



Logistics flows

- Logistics site
 - St Vulbas (France-Ain)
 - 10,000 sq. m
- Operations
 - Reception
 - Packing
 - Cold and ambient orders preparation
 - European distribution
 - Direct to clients (Medical analysis laboratories)
- Type of products
 - In vitro diagnosis devices
- Some figures
 - 500 references
 - Per year
 - 200,000 order
 - 700,000 order lines
 - 900,000 package



Controlled temperature process



Qualitative control upon reception.
Temperature checking by thermoprobe.



Storage on racks in cold room.
Permanent temperature control.



Shipments with isothermal packing.
Insertion of control probes.

Back





👁 Geodis

Global logistic provider
Expertise Healthcare
Our RFID approach

👁 Optitr@ck: asset management solution

👁 CHU Dijon project



🕒 Data capture system: RFID

- ▼ Business intelligence (to be pragmatic and use RFID in real life operations)
- ▼ Pilotes with several technologies (since 2001)

🕒 Optitr@ck : Container tracking solution

- ▼ Application Service Provider solution





Geodis

Global logistic provider
Expertise Healthcare
Our RFID approach

Optitr@ck: asset management solution

CHU Dijon project

Container tracking solution

Draw up statistics
On the whole
container fleet

Geographical
location in real
time of the fleet

Historic of
containers, box,
tubs

Opti-Tr@ck

Alerts



Filling/storage/shipping/collection/ cleaning/filling/storage/shipping/collection/ cleaning...



Container tracking solution

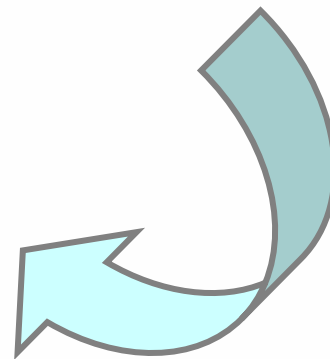
Historic by containers

- **Identity form of a container implemented at the first start into service**

- GRAI
- Technical specifications
- Start date
- Rental Agreement (number, deadline, notice, conditions, terms, costs...)
- Purchase date for existing containers
- ...

- **All events are automatically incremented during its life cycle**

- Number of cleanings
- Maintenance (dates, types, quantities operations)
- Preventive maintenances to do
- Lavages
- Stocks entry / shipping



Draw up statistics on the whole container fleet

- **Rotation rates**
 - **Immobilization times**
 - global
 - per client
 - per site (cleaning, production, storage...)
 - **Average number of events per containers (cleanings...)**
 - **On site statistics**
 - Average storage times empty / full
 - Average in quarantine times
- ⇒ **Allow to determine indicators and objectives**
- ⇒ Deduction of average costs generated



Linens containers tracking project



Goal of the project:

- To develop an asset management solution for linens
- To respect the rules concerning nosocomial infections (to optimise rotation rate and trace disinfection operations)

Information (identifications) used:

GLN

GRAI

GIAI (trucks)

Tracing of operations:

Load and Delivery (3 trucks dedicated)

Disinfection of linens containers

Container tracking

5 kind of containers

Linen containers tracking project



Hôpital Général



Delivery

Hôpital Bocage E

Loading full rolls

Hôpital Bocage W

Loading empty rolls



Delivery

Hôpital Champmaillot

Washing and disinfecting room



Au
Au
Au
Other sites

Linen containers tracking project



Why this project ?

- Using Optitr@ck system to track containers and trace operations.
- Using the same standard data (GRAI, GLN) valorised in one single asset management solution and independent of the data capture
- Using another data capture system to test limits of technologies
- Using mobil data capture system in order to valorise the job of drivers



RFID is « only » a data capture solution

Each frequency and solution (active or passive tags) has interests and limits

The best in the future would be to have one solution to track and trace containers, patients... in order to optimise cost.

But each cycle (container, food rolls, linen rolls, plastic boxes, patients...) is different.

So instead of waiting for THE universal solution of magic data capture, it is better to try, test and develop further solutions to be ready to do the good choice in the future.

However, if the data capture can't be standard today, data have to be.