

OpenLMIS

9 May 2018



Our goal

Today, you'll leave with a better understanding of:

- 1. What is OpenLMIS**
- 2. Where does OpenLMIS fit**
- 3. How OpenLMIS approaches interoperability**

OpenLMIS Initiative

Donors

BILL & MELINDA
GATES foundation



USAID
FROM THE AMERICAN PEOPLE



The ROCKEFELLER
FOUNDATION



PEPFAR
U.S. President's Emergency Plan for AIDS Relief



Life Saving
Commodities
Improving access,
saving lives

Gavi
The Vaccine Alliance

Implementers



Chemonics

VILLAGE REACH
Starting at the Last M



amp
AGENCE DE
MEDECINE PREVENTIVE



Technology Partners

ONN



OPENSERP



SolDevelo
solutions development

ThoughtWorks®

BrowserStack

Through **9**
implementations



OpenLMIS manages
logistics processes
for over **10,000**
health facilities across
Africa

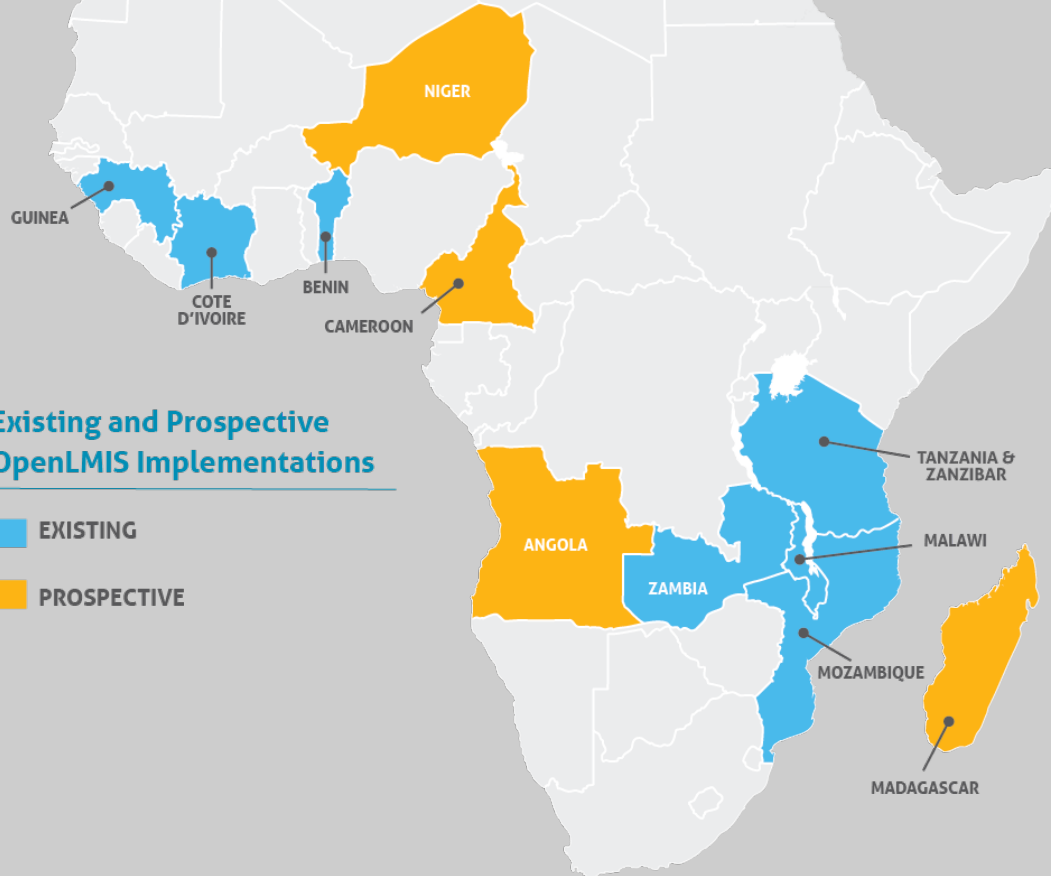


Increasing
data visibility and
timeliness

Existing and Prospective OpenLMIS Implementations

 EXISTING

 PROSPECTIVE



The OpenLMIS Software Vision

Shared Investment, Shared Benefit



Promoting code reuse through microservices architecture and community approach

Interoperable



Standards-based, API-driven interoperability to work with almost any other system

Configurable and Extensible



Modular architecture enables extensibility *without* forking

OpenLMIS Features



Requisitions:

Use stock data to generate orders for a configurable approval process.



Order Fulfillment:

Fulfill and ship orders based on stock on hand and send a Proof of Delivery from the ordering facility.



Mobile Integration:

Connects dispensing and supply information at the point of care through an integration with OpenSRP.



Stock Management:

Captures inventory data and stock movements to provide an overview of full stock availability. Record vial wastage and VVM status.



Analytics and Reporting:

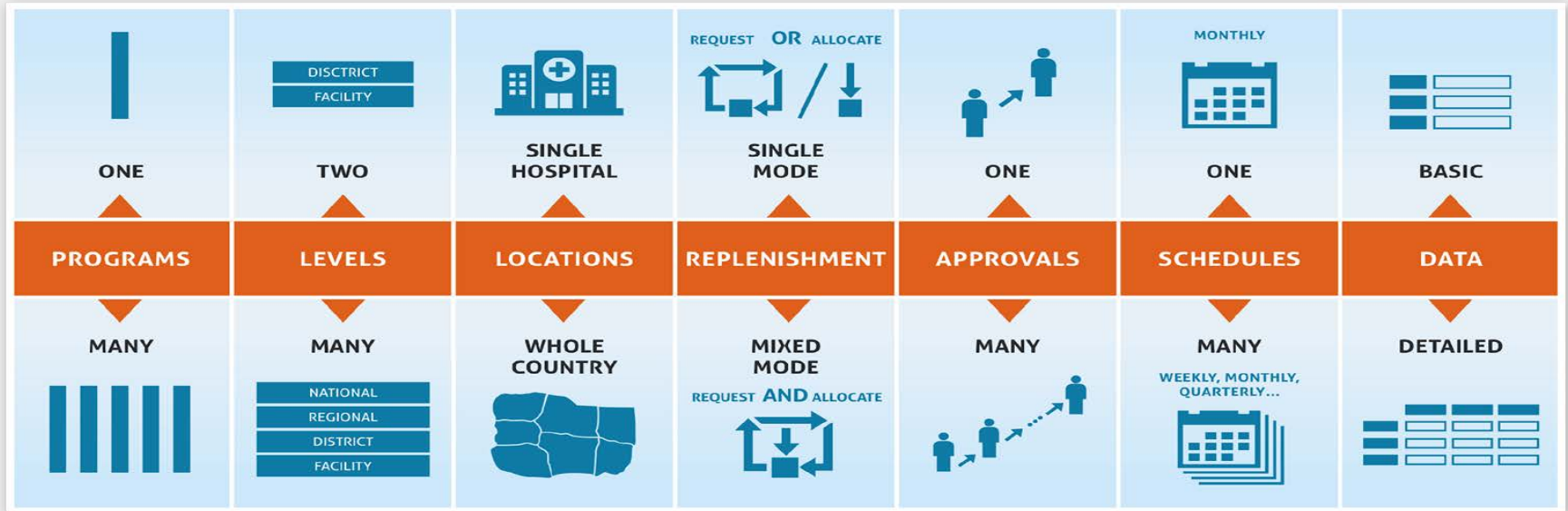
Use and display data with intuitive visualization that support decision-making.



Equipment (CCE):

Track cold chain equipment inventory, functional status and receive real-time alerts on device temperature.

Configurability



Where does OpenLMIS fit

Ministry

iNGO, Charity, 3PL, Private

Mobile health



ERP



HMIS

Clinical

LMIS



Mobile health



ERP



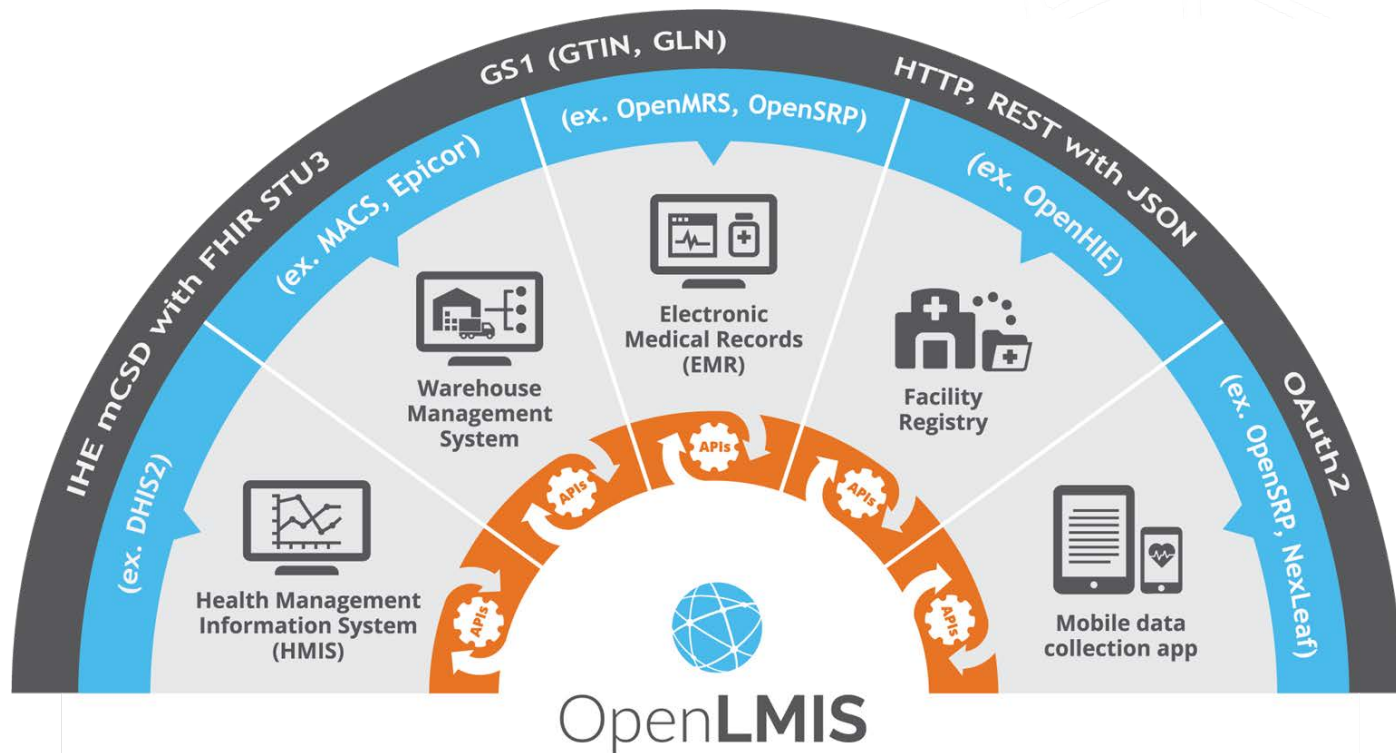
HMIS

Clinical

LMIS



Standards based interoperability



Thank You!



Open**LMIS**

Contact us by emailing info@openlmis.org

Josh.Zamor@openlmis.org

Learning more



openmis.org

Blog posts, implementation map, features, tools, and the Implementer Toolkit can be found on the OpenLMIS website.

Wiki

The wiki is the source for community meeting notes, committee descriptions, product design considerations, project management, and the living product roadmap.

Documentation

ReadtheDocs contains developer-oriented OpenLMIS documentation. Users can find developer docs, ERD schemas, an OpenLMIS coding style guide, and API documentation.

Visit the OpenLMIS YouTube channel for demo videos and more

Analytics Infrastructure

