

KEMSA

KENYA MEDICAL SUPPLIES AUTHORITY



YOUR PARTNER IN HEALTHCARE

MEDICINES TRACEABILITY FOR PATIENT SAFETY IN KENYA

9TH MAY 2018

BY:

MR. FREDRICK WANYONYI
Ag. CHIEF EXECUTIVE OFFICER

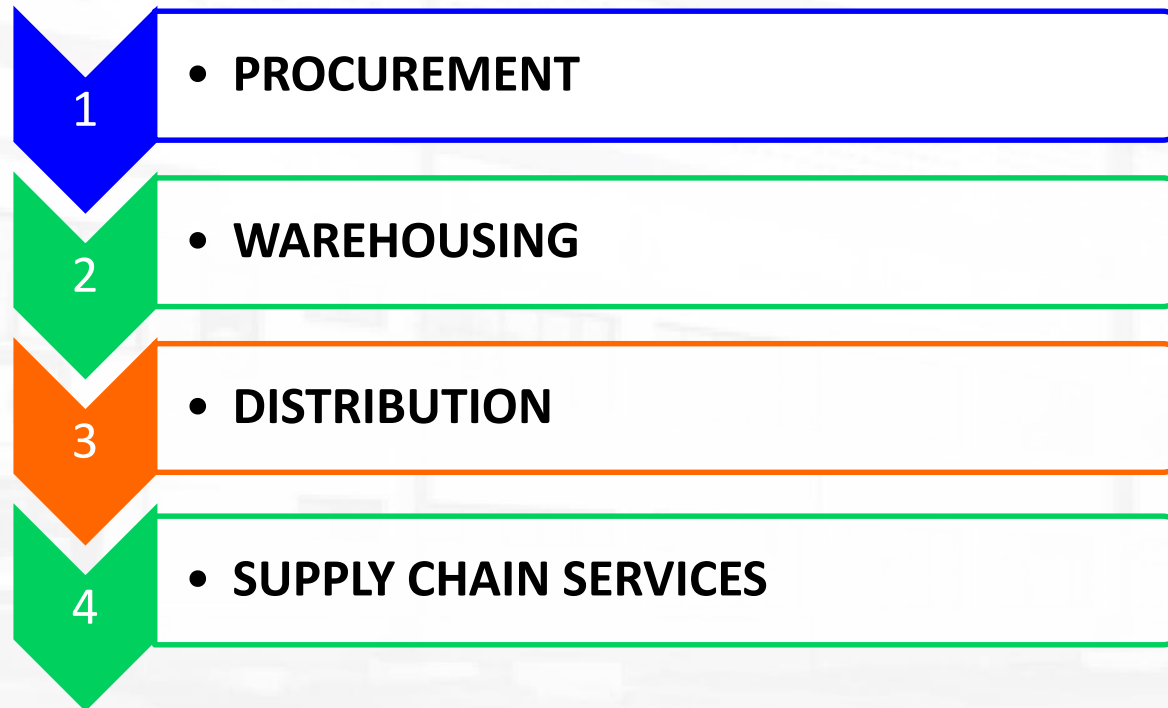


www.kemsa.co.ke

Email: info@kemsa.co.ke, sales@kemsa.co.ke  [kemsakenya](https://www.facebook.com/kemsaKenya)  [@Kemsa_Kenya](https://twitter.com/Kemsa_Kenya)

INTRODUCTION

KEMSA is a medical logistics management state corporation in the Republic of Kenya whose mandate is to Procure , Warehouse , Distribute medical commodities and offer supply chain solutions in the Kenyan health sector.

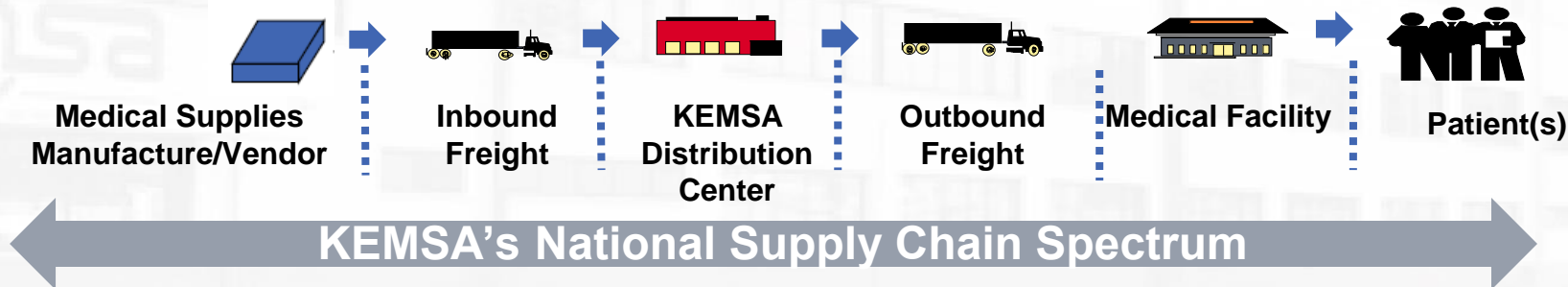


Background

In line with its mandate, KEMSA has ensured ;

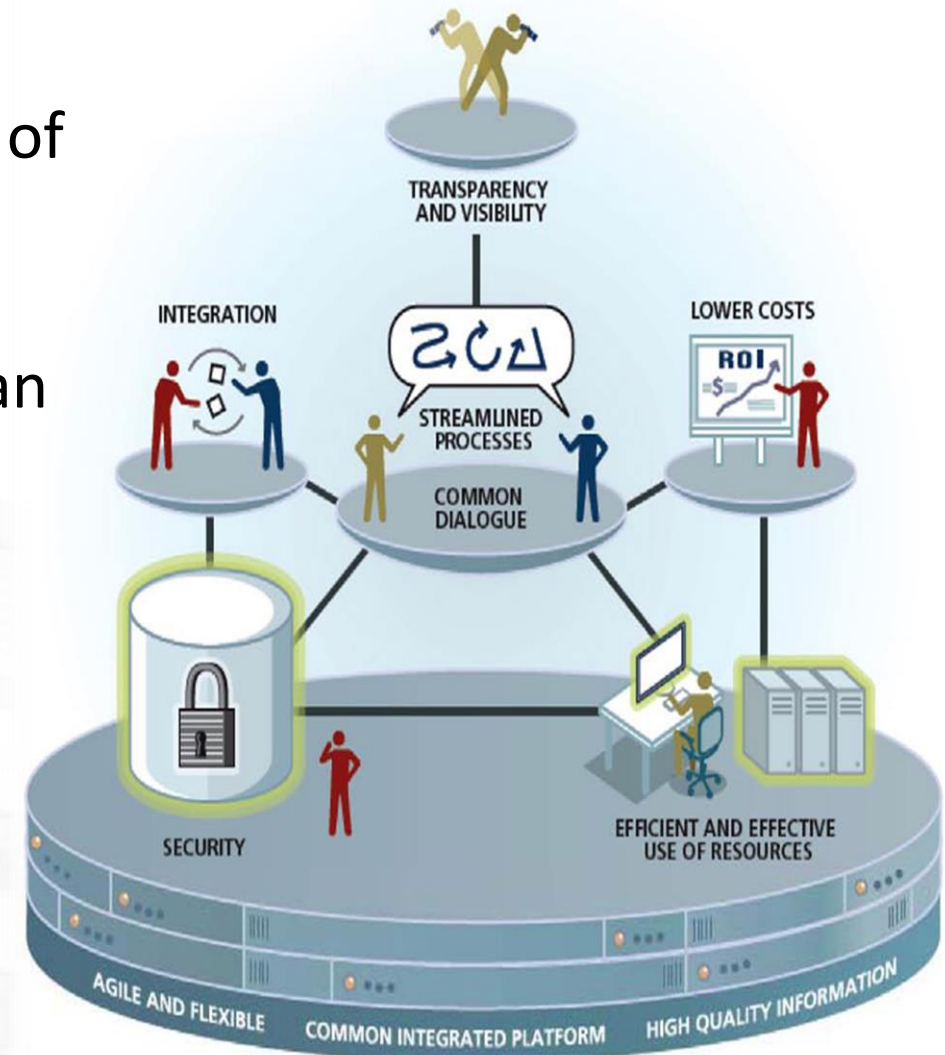
- High quality and cost effective supply of products at all the service delivery points/ health facilities
- Quality and Safety of products supplied guaranteed and thus patient safety.
- Quality ,value for Money supply chain services

The Supply chain consists of flow of products, funds and information as shown below



KEMSA has advanced innovations especially in the area of ICT. Some of the innovations include:

- All Business processes automated and integrated on an ERP platform to manage the whole supply chain
- Mobile applications
- E- tools: - self-service portal (LMIS)



- Prior to adopting **Global Standards 1 (GS1)** barcode system, KEMSA was generating its own barcodes
- On 1st July 2014 KEMSA became a member of GS1 through GS1 Kenya
- KEMSA Signed contract with GS1 Kenya for training and implementation of GS1 barcode system
- KEMSA upgraded its ERP system and mobile application to align with the GS1 barcode requirements . All relevant staff were trained.
- GS1 is now a mandatory requirement in the tender documents.



Traceability is the process that “enables you to see the movement of **drugs** or medical commodities across the supply chain.

Drugs can be traced backwards to identify the history of the transfers and locations of a product, from the point of manufacture onwards.

KEMSA has implemented GS1 barcoding system to enable traceability of medical commodities in the supply chain.

The GS1 codes enables KEMSA to identify its own drugs right from delivery to the warehouse, on transit and at the facility



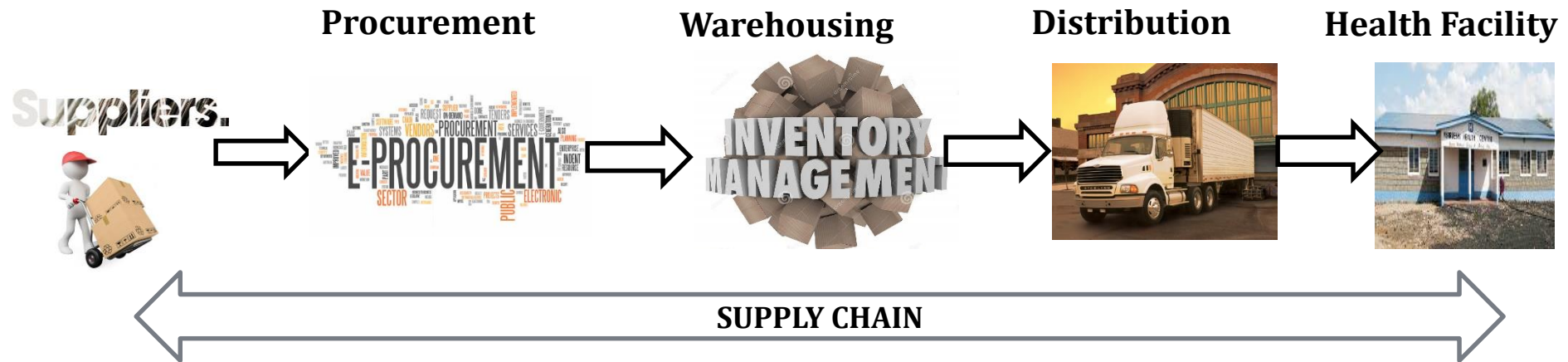
Global Standards 1 (GS1)Barcode

This system ensures

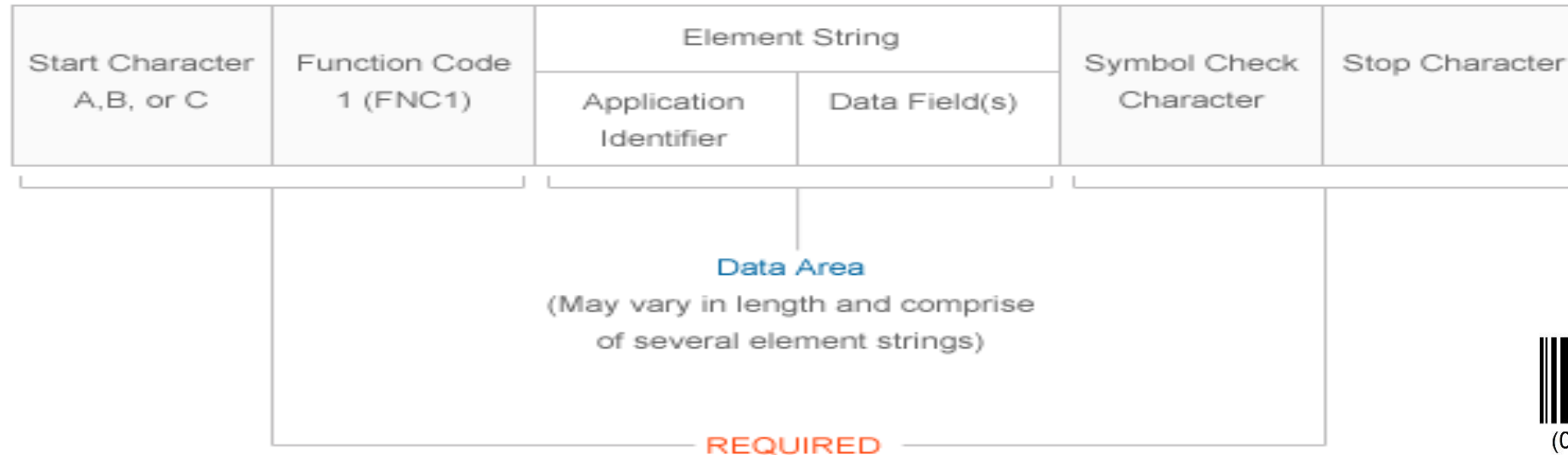
- Traceability of medical commodities across the supply chain from the manufacturer to the end user(Patient).
- Elimination of counterfeit drugs.
- Consistency along the supply chain as products(commodities) are referred using the GS1 barcodes



MEDICINES TRACEABILITY FOR PATIENT SAFETY IN KENYA



KEMSA has Adopted the GS1-128 Standard Structure



The GS1-128 barcode has the following:

- Code 128 start character (START-A, START-B or START-C)
- Code 128 FNC1 character
- Application Identifier (AI)
- Encoded Data
- Symbol Check character
- Stop Character

Information in Barcode:-

- Product Code
- Expiry Date
- Batch



The use of GS1 barcoding standards has provided KEMSA with the following benefits:

- Fast and accurate data capture at every point in the supply chain
- Traceability of medical commodities from supplier to the patient
- Less stock-holding and less waste
- Better control over distribution and storage
- Fewer errors in the recognition of goods
- Improved communications throughout the supply chain
- One standard for use with all trading partners, therefore no conflicting demands.



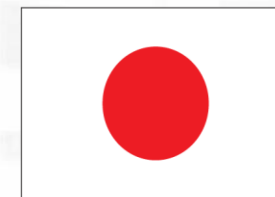
STRATEGIC PARTNERS:



USAID
FROM THE AMERICAN PEOPLE



The World Bank



From the People of Japan



Q&A



www.kemsa.co.ke

Email: info@kemsa.co.ke, sales@kemsa.co.ke  [kemsakenya](https://www.facebook.com/kemsakenya)  [@Kemsa_Kenya](https://twitter.com/Kemsa_Kenya)



*Thank
You*

Your Partner in HealthCare



www.kemsa.co.ke

Email: info@kemsa.co.ke, sales@kemsa.co.ke

 [kemsakenya](https://www.facebook.com/kemsakenya)

 [@Kemsa_Kenya](https://twitter.com/Kemsa_Kenya)