

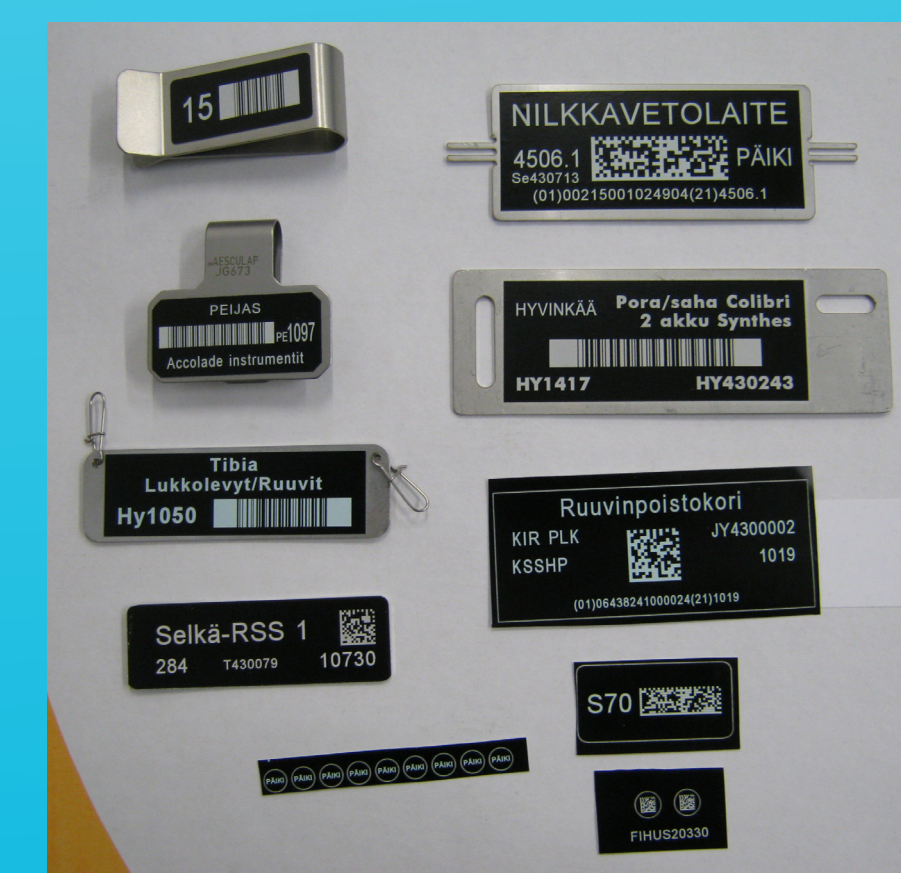
# 10 HOSPITAL DISTRICTS, 3 DATA CARRIERS, 1 STANDARD

## The challenge

The Hospitals in Finland were using their own internal numbers to identify instruments. They were also adopting different technology depending on the size of the hospital. The biggest ones are now using RFID whereas the majority of hospitals use barcodes. Some of the smallest hospitals still rely on Human Readable Information because they lack the resources to upgrade their systems. This made it a problem for hospitals to identify instruments if they got borrowed from another hospital.



GS1 keys used  
GTIN (01) + serial number (21)



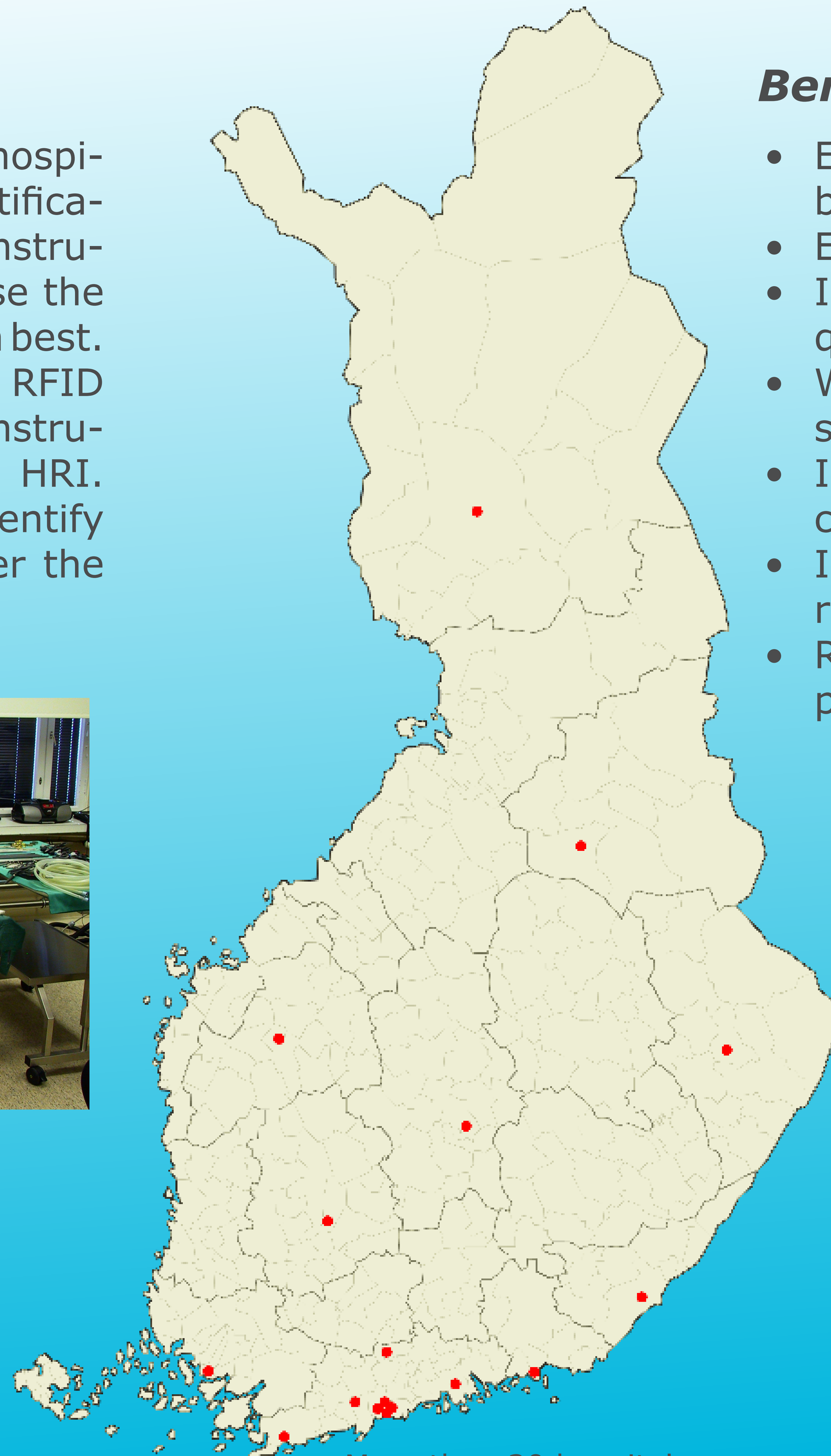
## Solution

GS1 standards allow all hospitals to use the same identification keys to identify their instruments but they can choose the data carrier that suits them best. The biggest hospitals use RFID but they also mark the instruments with barcodes and HRI. Therefore everyone can identify the instruments no matter the size of the hospital.



## Benefits

- Easier and safer to share and borrow instrument trays
- Effective recall management
- Instrument sets can be located quickly
- Warnings provided if a step is skipped
- Improved workflow, communication and reporting
- Inventory visibility available in real-time
- Reduction in administrative paper work



More than 20 hospitals

